

**SUBMERSIBLE
DEWATERING PUMP**

DIVA 3~7.5HP

SERIES 50HZ



Features

- Double mechanical seal SIC/SIC with SIC/SIC in oil bath
- Heavy-duty with drainage mode
- Protected with Yamada overload protector
- Top flange discharge with semi-circumferential cooling for continuous duty

Applications

- Lime slurries
- Mill scale
- Coal runoff sumps
- Wash down sumps
- Mining
- Tunneling
- Quarries

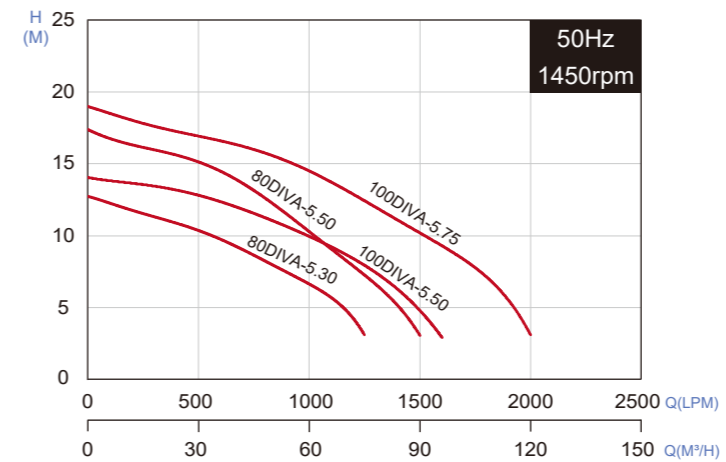
Specifications

	Liquid Temperature	0~40°C (32~104°F)
	Submersible depth	20M
Motor Part	Frequency	50Hz
	Pole	4 Pole
	Type	Dry Type
	Insulation	Class F
Pump Part	Protection	IP 68
	Protector	Auto-Cut
	Bearing	Ball Type
	Mechanical seal	Double Mechanical Seal
	Impeller	Semi-open Impeller

Data Chart

Type	Output		Discharge Inch	F.L.A. 3ø 400V	Rated		Maximum		Free Passage mm	Weight(W/O Cable) kg
	HP	kW			Head M	Cap. LPM	Head M	Cap. LPM		
80DIVA-5.30	3	2.2	3"	5.2A	10	550	12.7	1250	12	78
80DIVA-5.50	5	3.7	3"	9.0A	15	500	17.4	1500	12	104
100DIVA-5.50	5	3.7	4"	9.0A	10	1000	14	1600	12	102
100DIVA-5.75	7.5	5.5	4"	12.4A	15	900	19	2000	12	107

Performance Curve



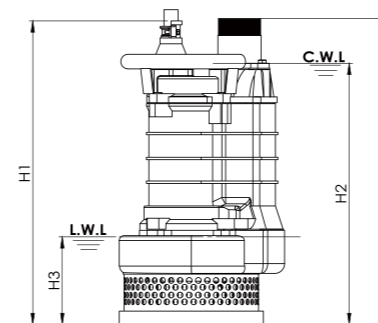
All technical information is subject to change without notice.



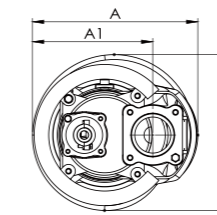
High Chrome Steel
Semi-open Impeller



Agitator (Optional)
EN-GJS-500

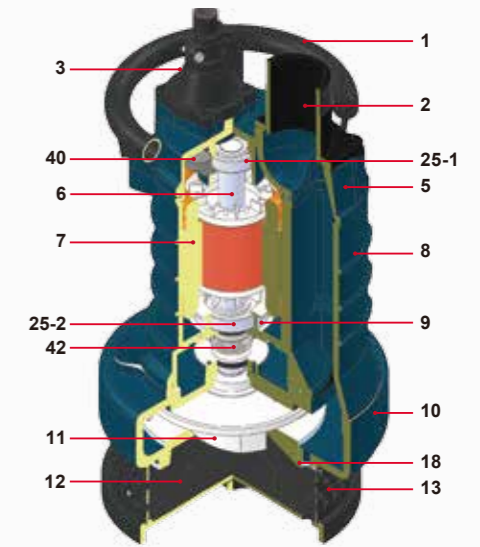


80DIVA-5.30



Dimensions (mm)

Type	A	A1	B	H	H1	H2	H3
80DIVA-5.30	346	247	310	620	630	530	180
80DIVA-5.50	365	275	352	699	694	607	180
100DIVA-5.50	354	275	322	700	694	607	180
100DIVA-5.75	365	275	352	699	694	607	180



Parts and Material List

No.	Part	Material
1	Handle	SC
2	Discharge	SC
3	Gland Holder	EN-GJL-200
5	Top Bracket	EN-GJL-200
6	Shaft with Rotor	AISI 420
7	Stator	-
8	Motor Frame	EN-GJL-250
9	Bearing Bracket	EN-GJL-200
10	Pump Casing	EN-GJL-250
11	Impeller	High Chrome Steel
12	Base Plate	EN-GJL-200
13	Strainer	SC
18	Suction Plate	High Chrome Steel
25-1	Upper Bearing	NTN/TPI
25-2	Lower Bearing	NTN/TPI
40	Protector	YAMADA
42	Mechanical Seal	Upper:SIC/SIC ; Lower:SIC/SIC

TPI is a family brand of NTN group.

